



四川建築職業技術學院

SICHUAN COLLEGE OF ARCHITECTURAL TECHNOLOGY

2016届毕业生

就业质量年度报告

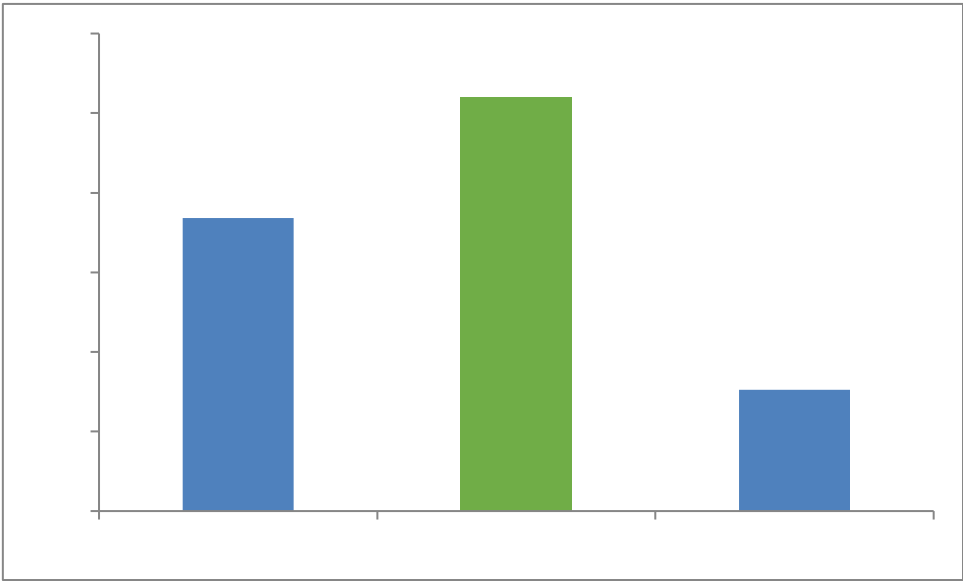
二〇一六年十二月

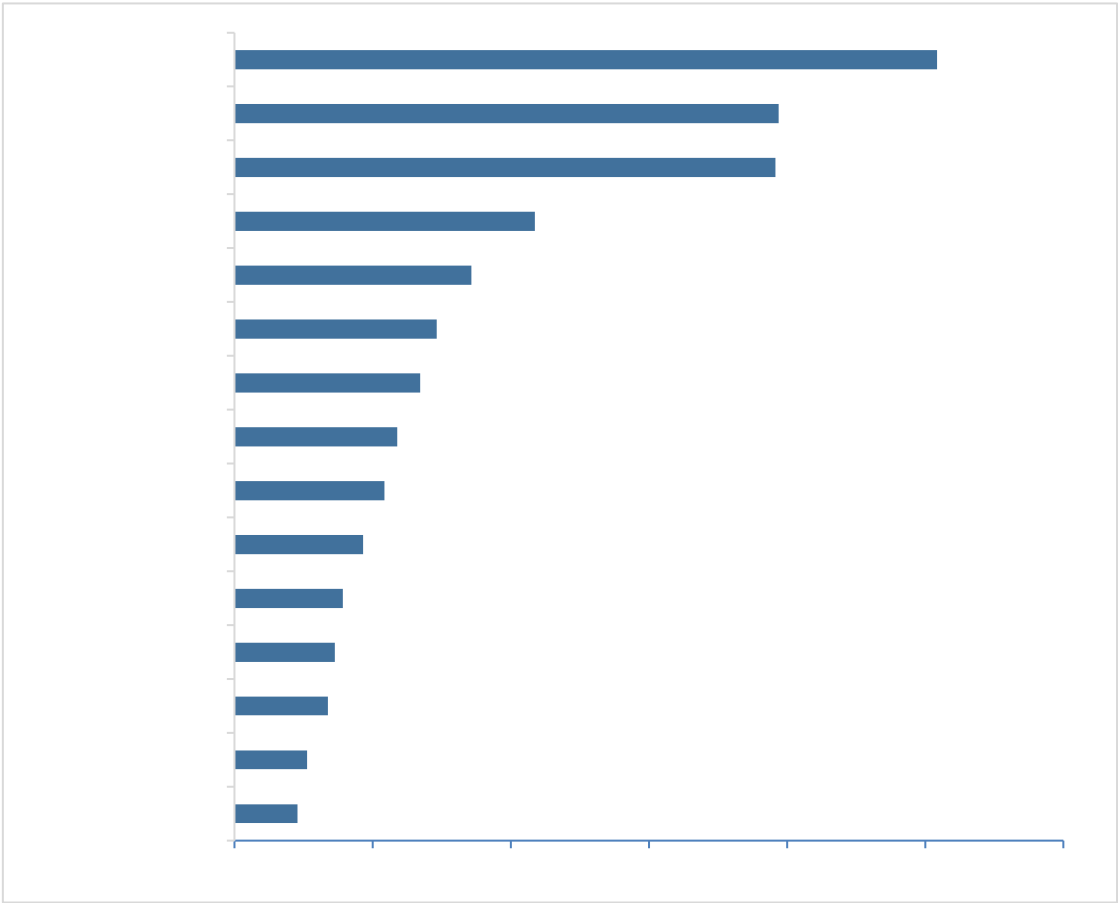




第一章 就业创业状况	1
.....	1
.....	5
.....	14
.....	14
第二章 就业质量	17
.....	17
.....	17
.....	20
.....	20
第三章 求职过程	21
.....	21
.....	21
第四章 就业创业工作评价	22
.....	22
.....	22

.....	23
.....	24
第五章 教育教学过程评估.....	25
.....	25
.....	25
.....	26
.....	27
.....	27
第六章 母校满意度和推荐度.....	28
.....	28
.....	30
第七章 用人单位评价	31



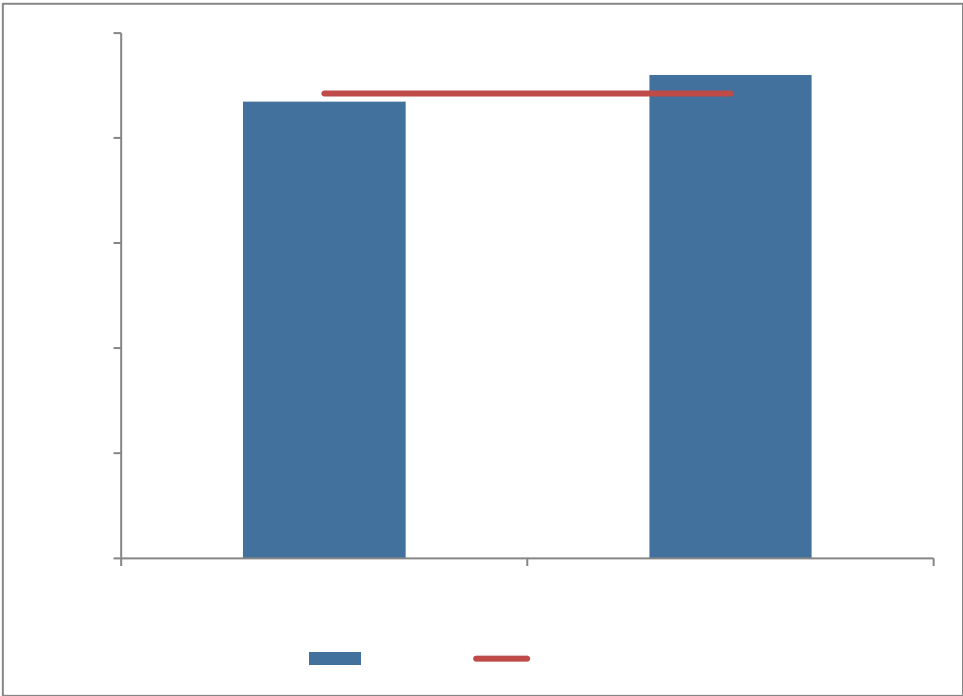


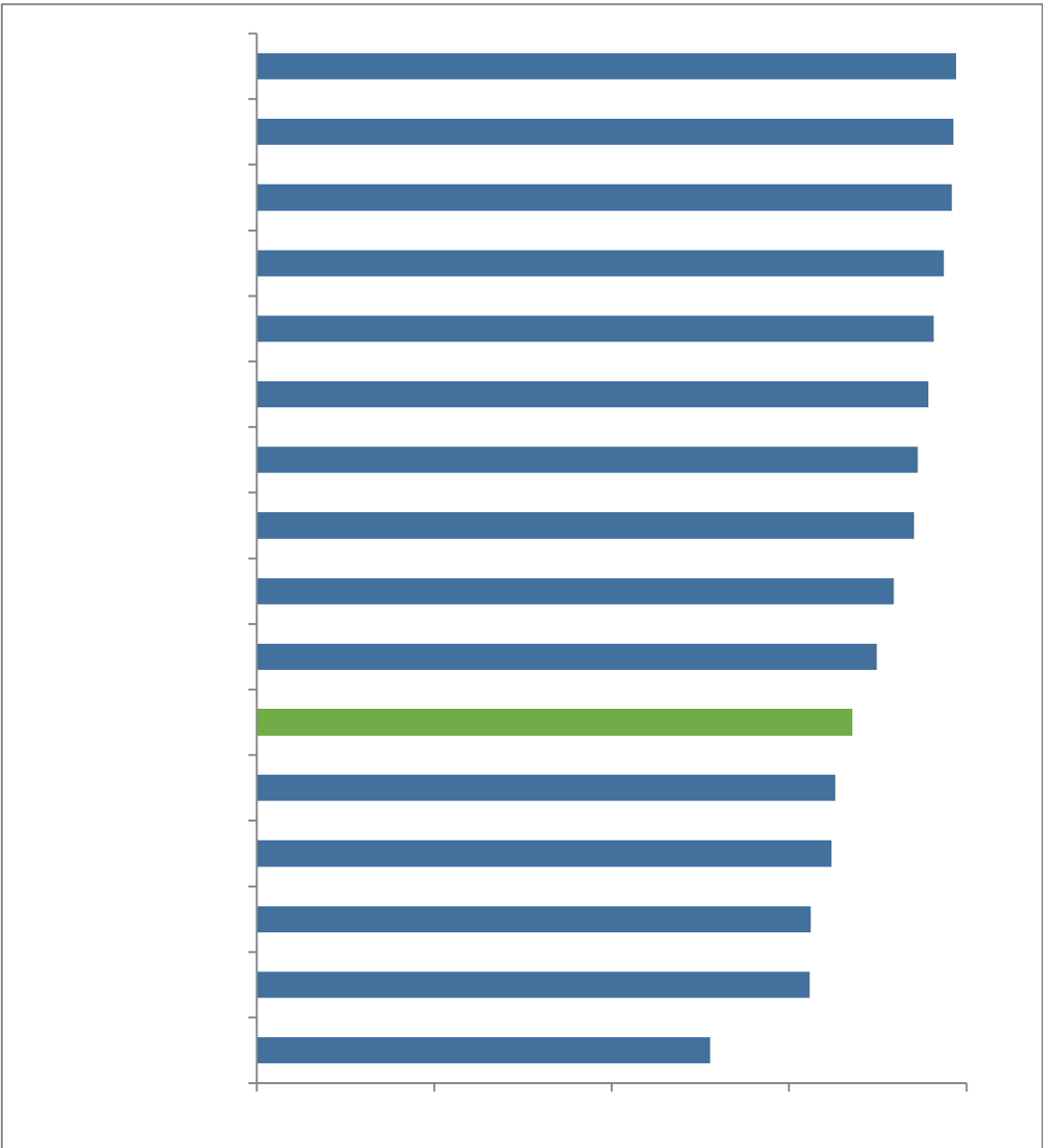
	1059		43
	983		42
	192		42
	177	位	41
	141	下	38
	118		38

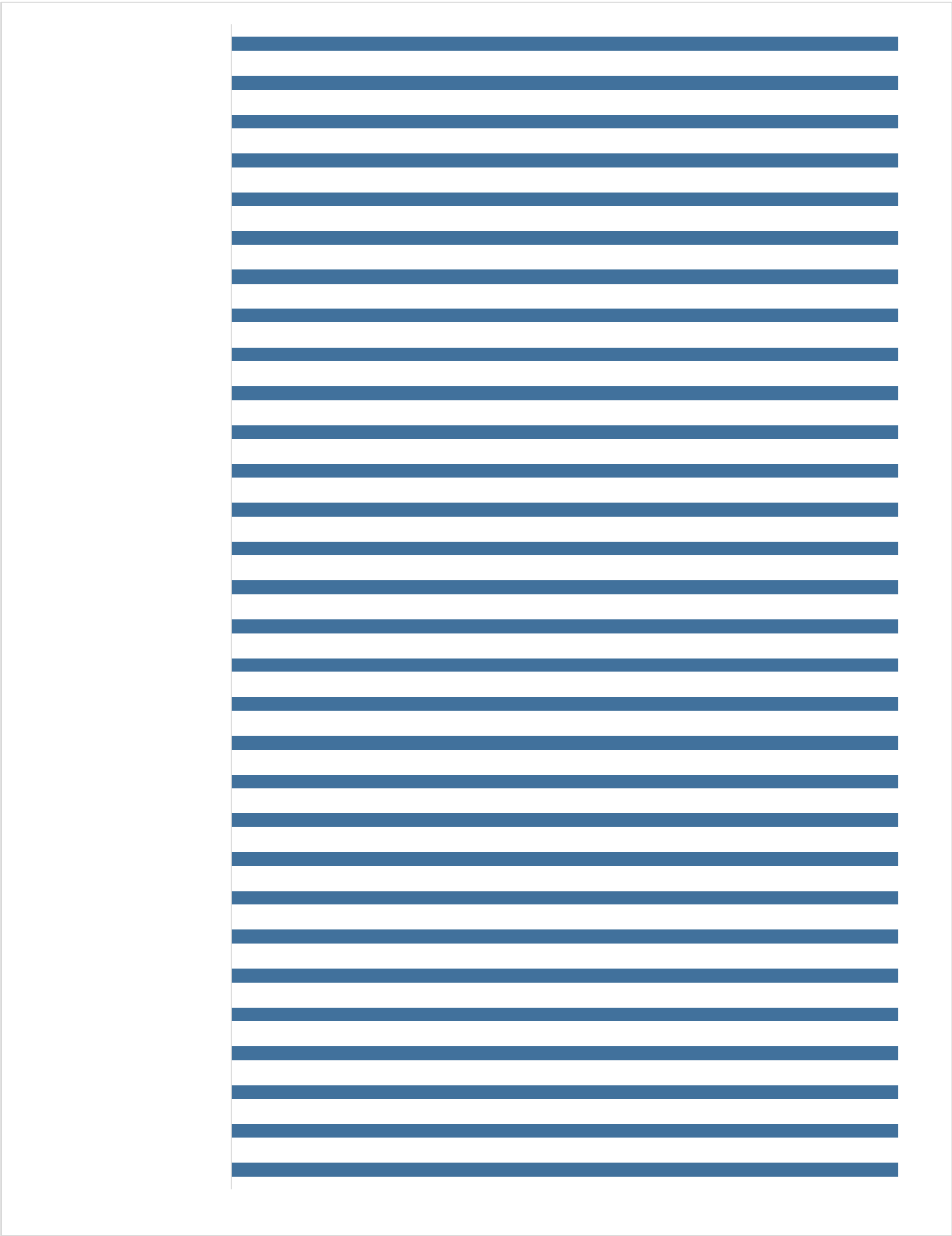
	113		38
	106		35
	100		35
	94		35
	91		35
	89	全	34
	87		34
	81		32
	79		31
	76		30
	68		30
	67	下	29
	66		27
	63		27
	61		26
	61		26
	60		24
	57		23
	55		21
	53		18
	49		17
	45		14
	44		

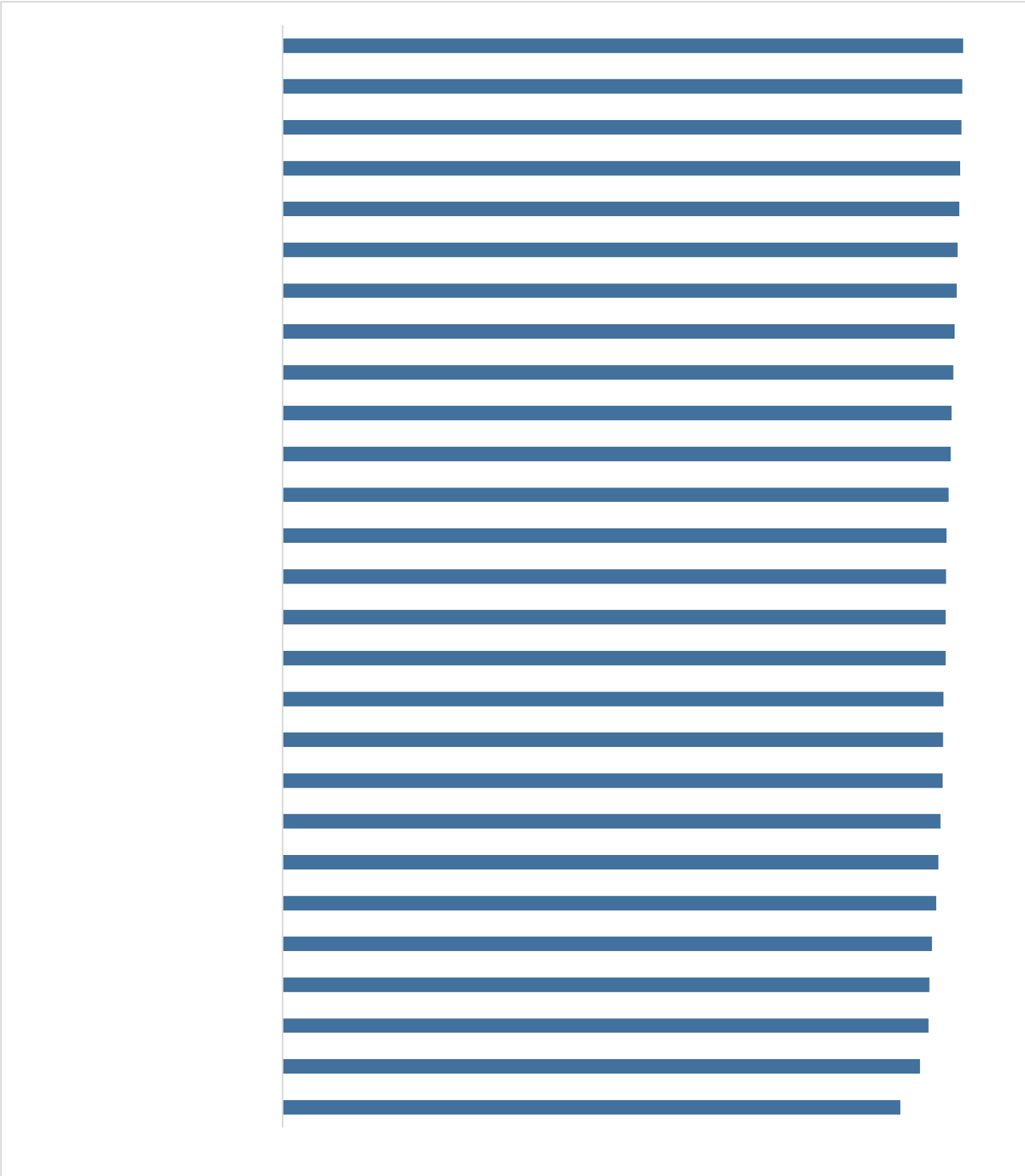
			"!
	"		

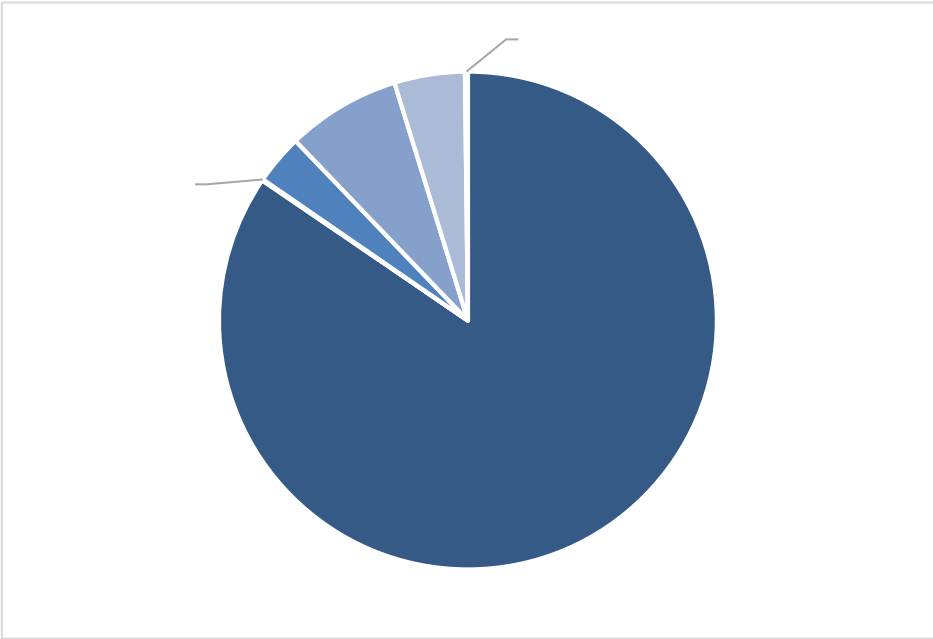


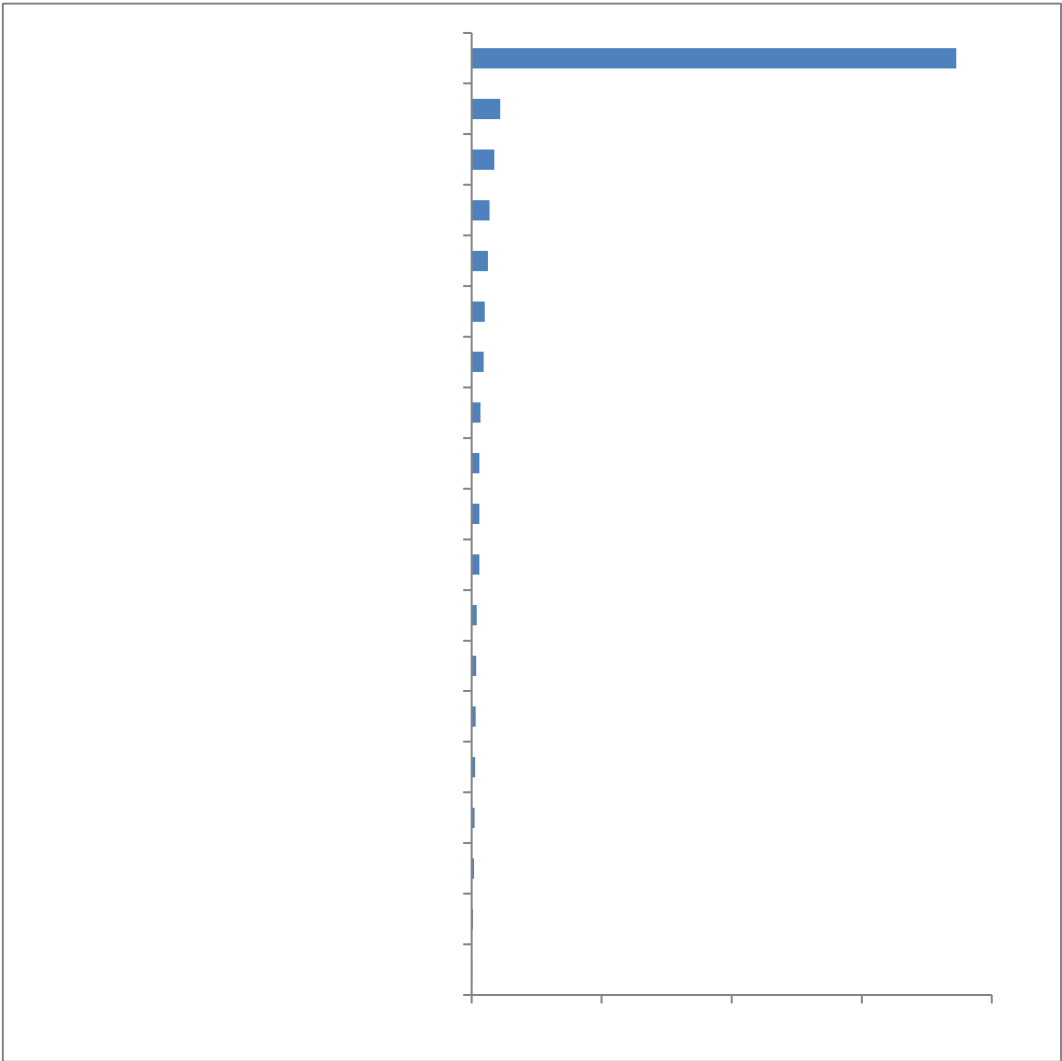


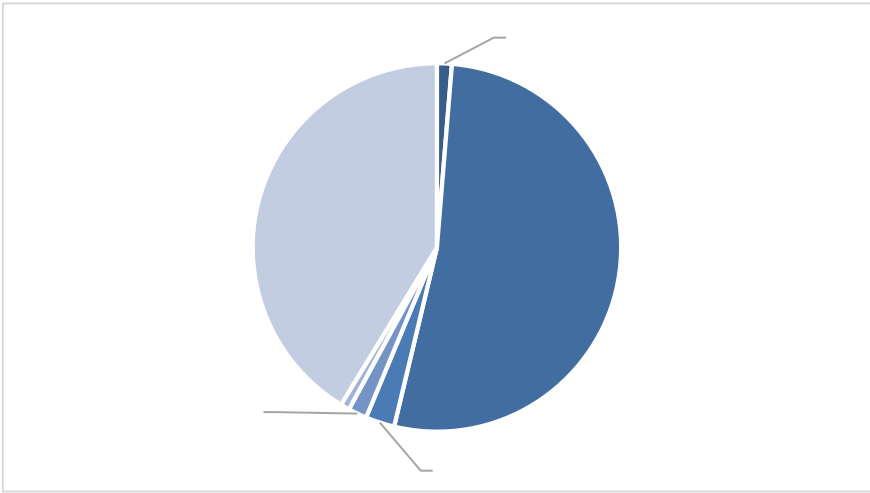




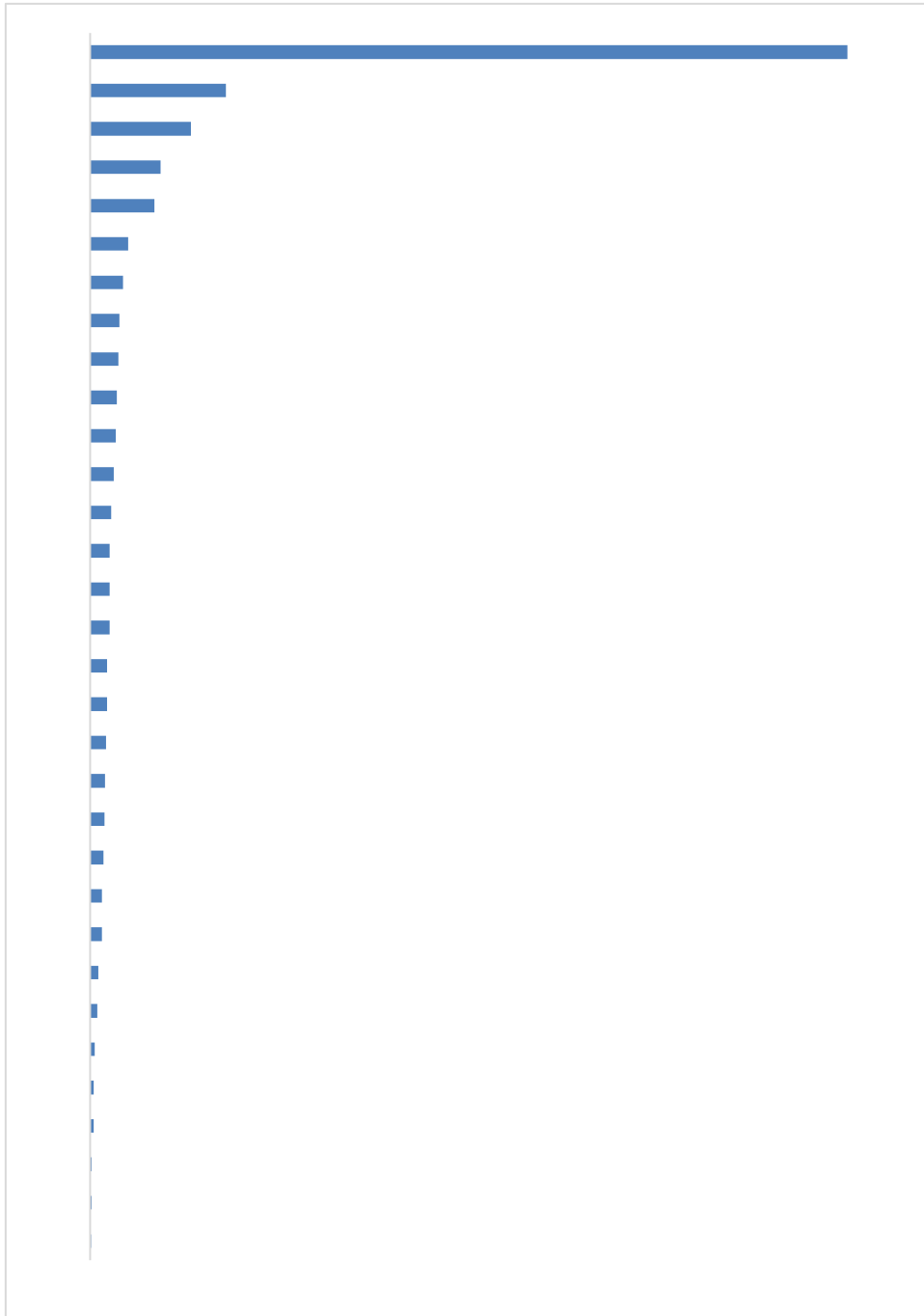




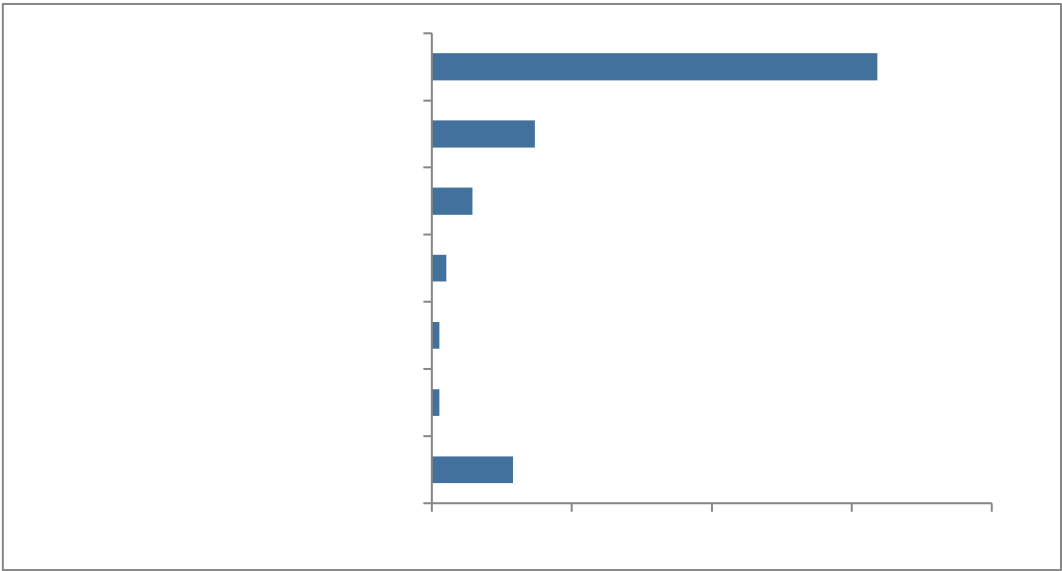


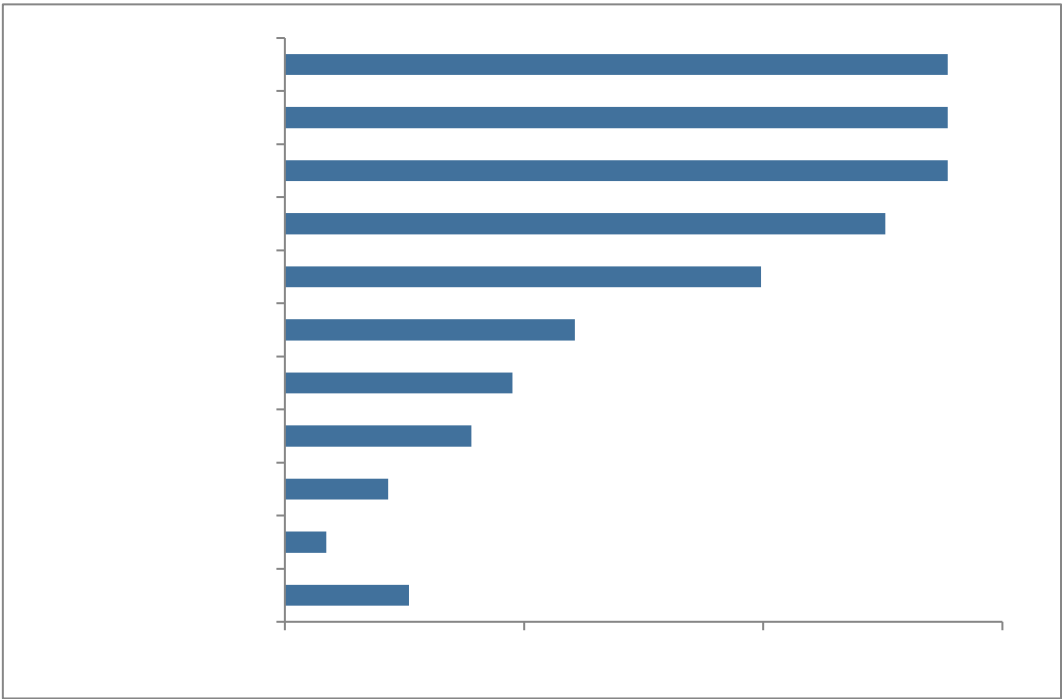
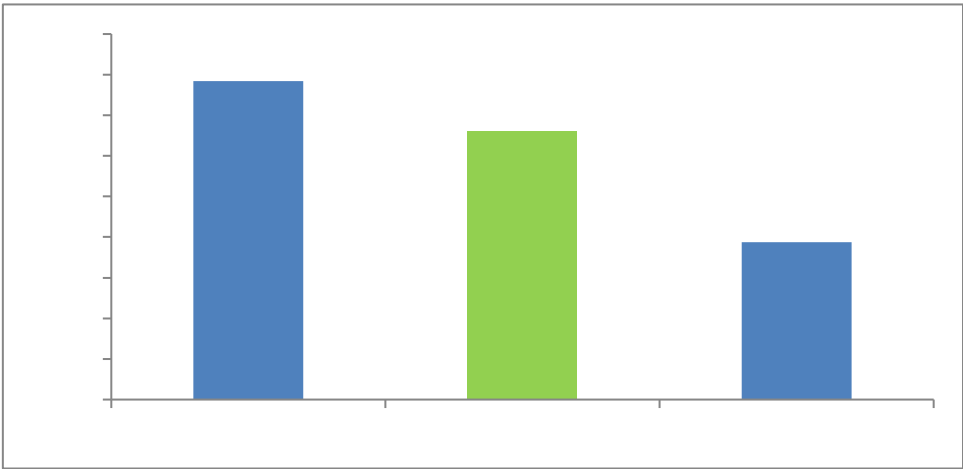


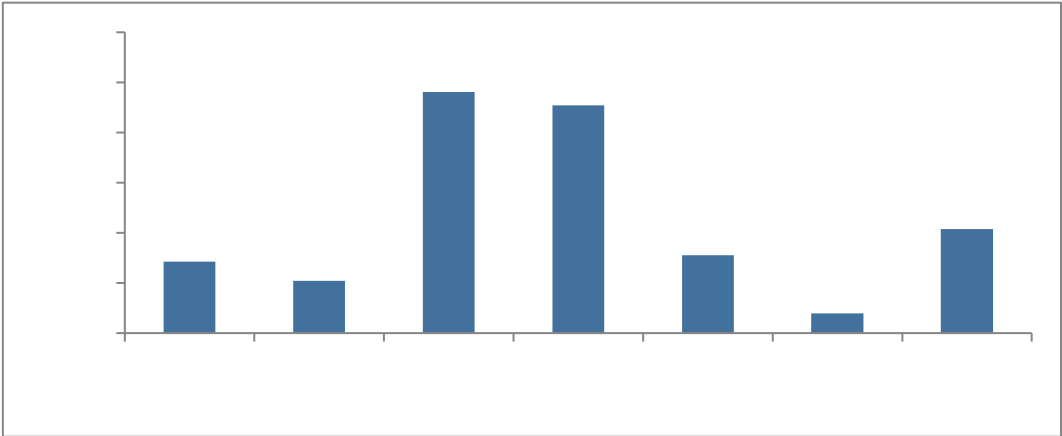
1.

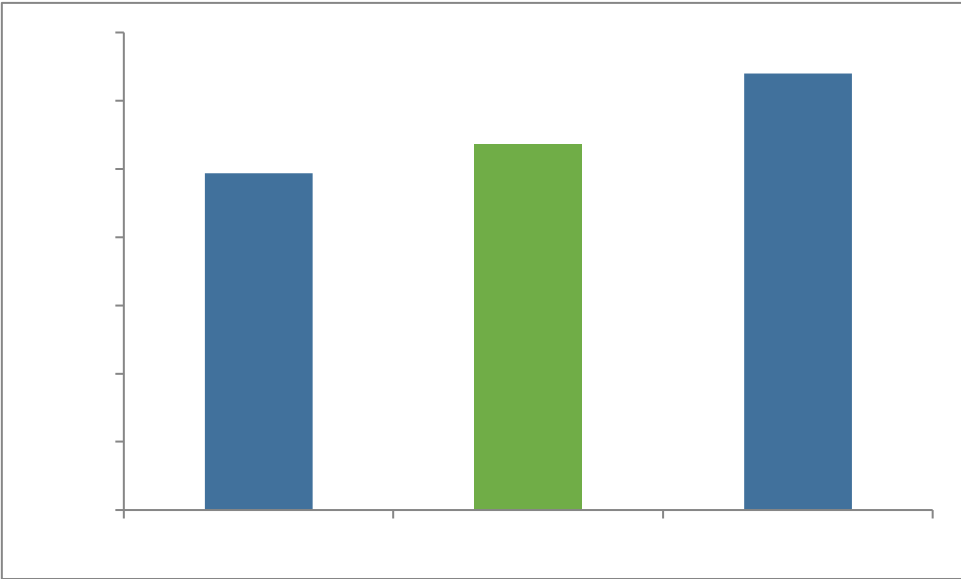


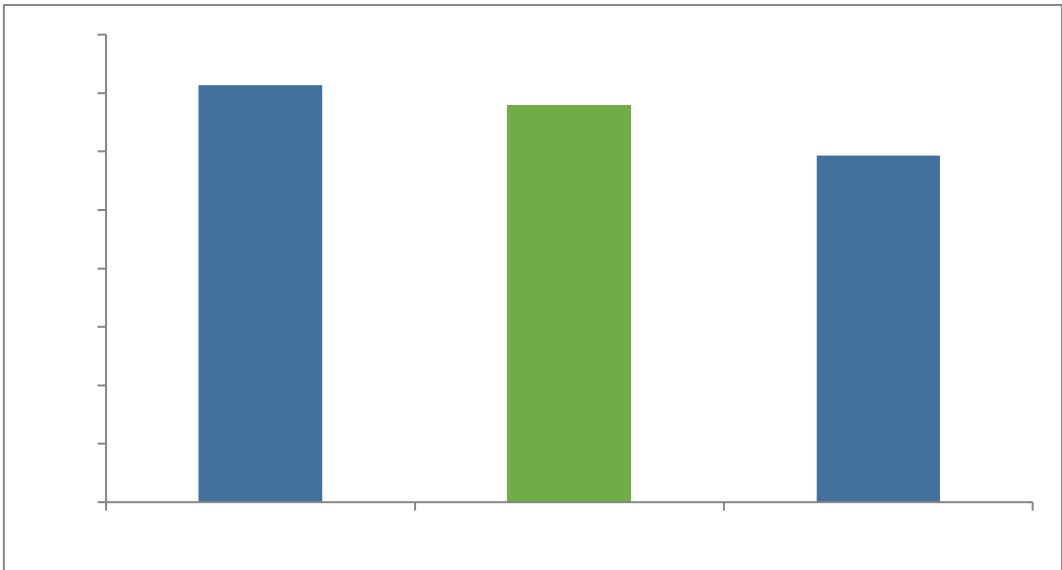
2.





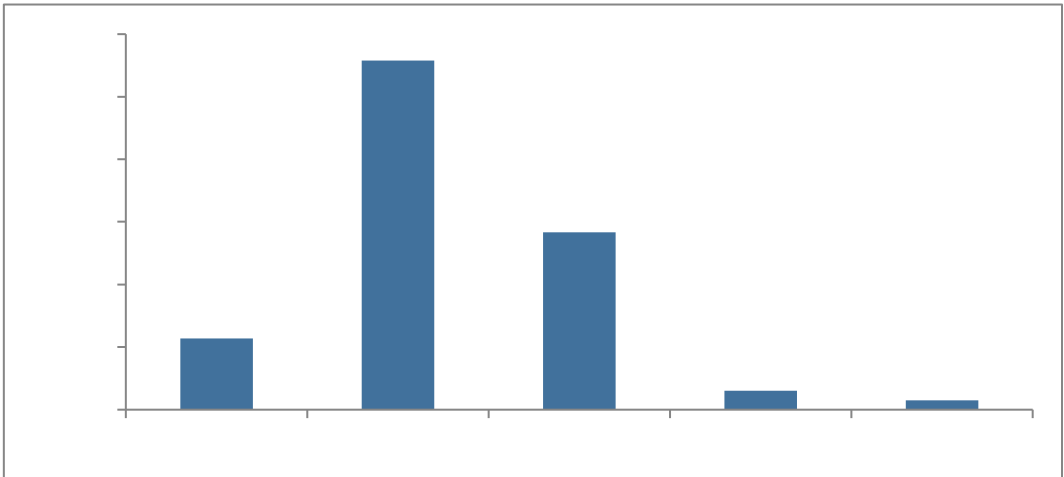
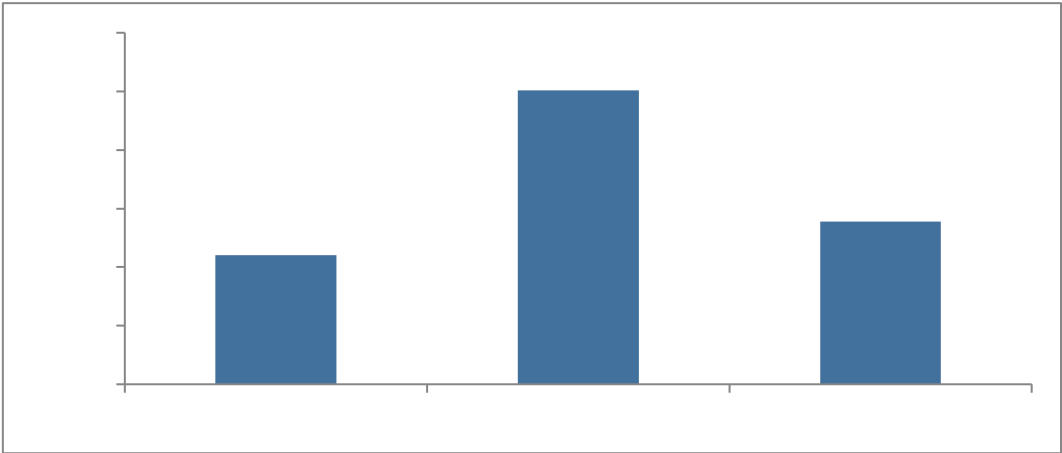


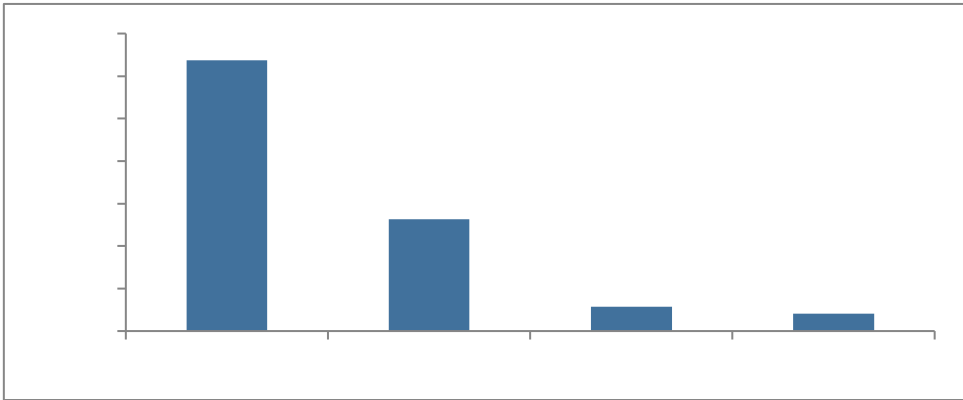
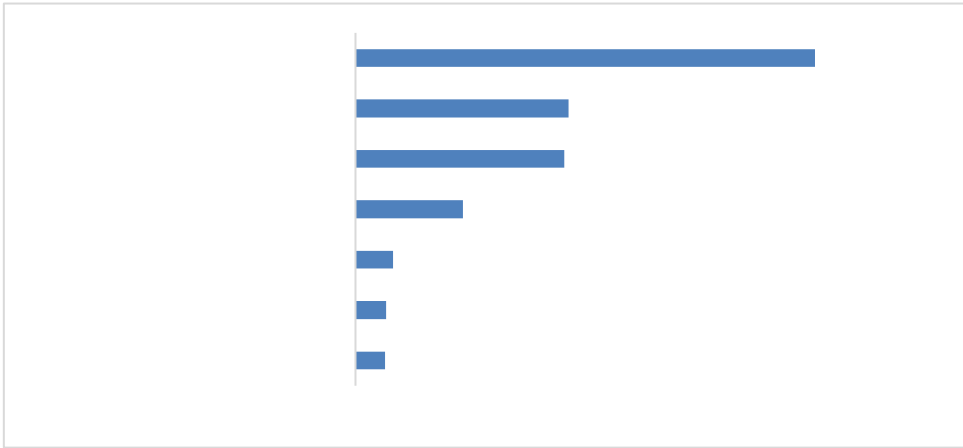


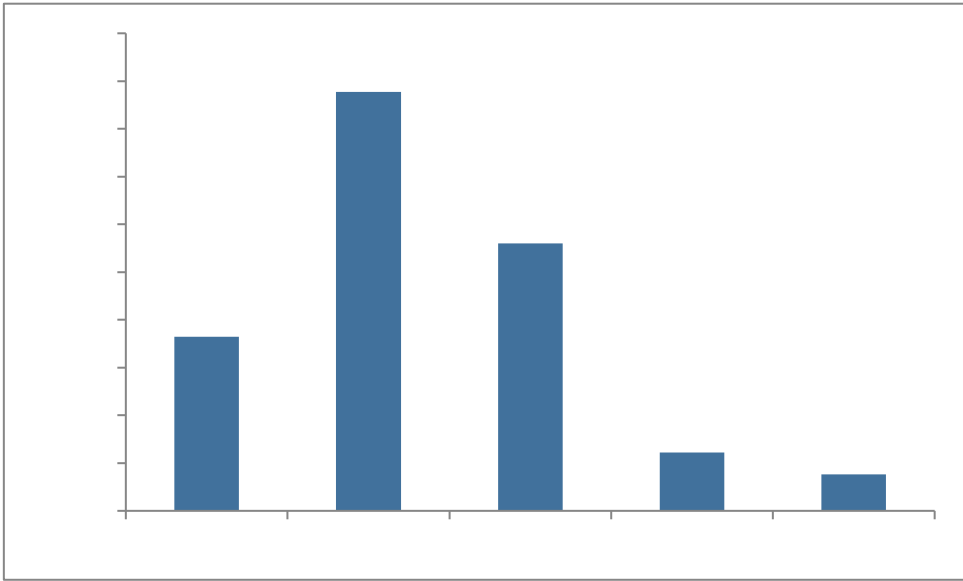


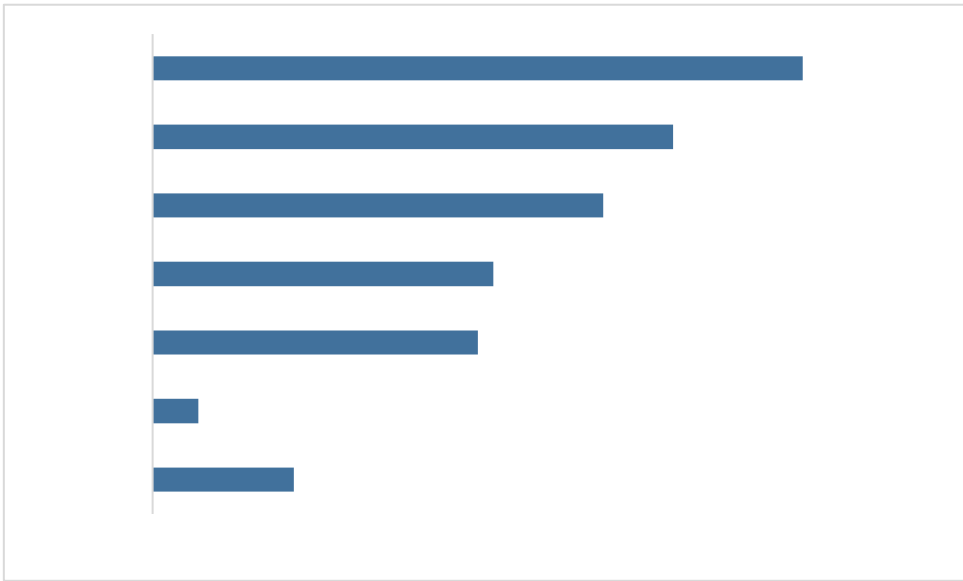
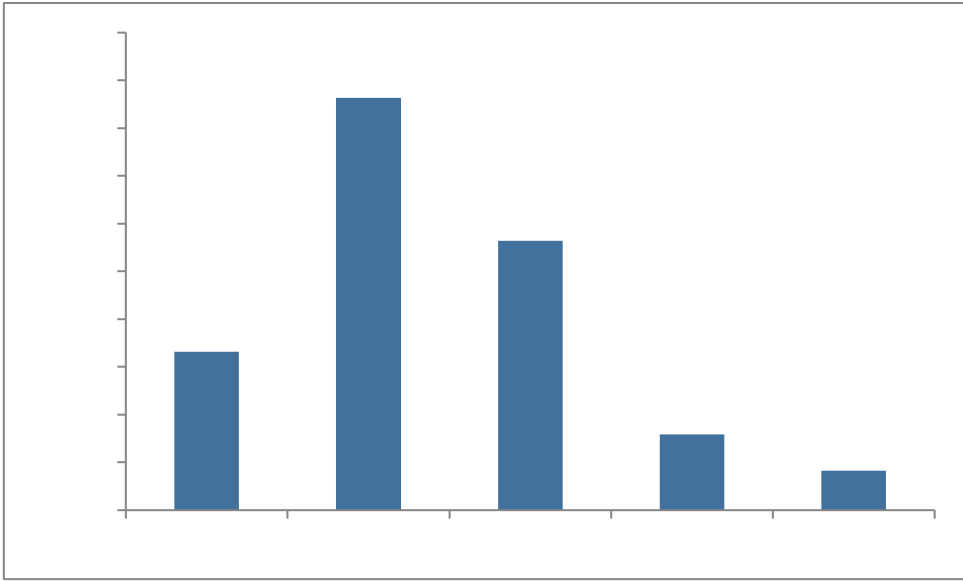
	4950		3744
	4789		3680
	4684		3636
	4400		3623
	4388		3616
	4036		3588
	3989		3525
	3956		3456
	3956		3425
	3929		3424
	3888		3417
	3868		3410
	3843		3406
	3760		3400
	3750		3359

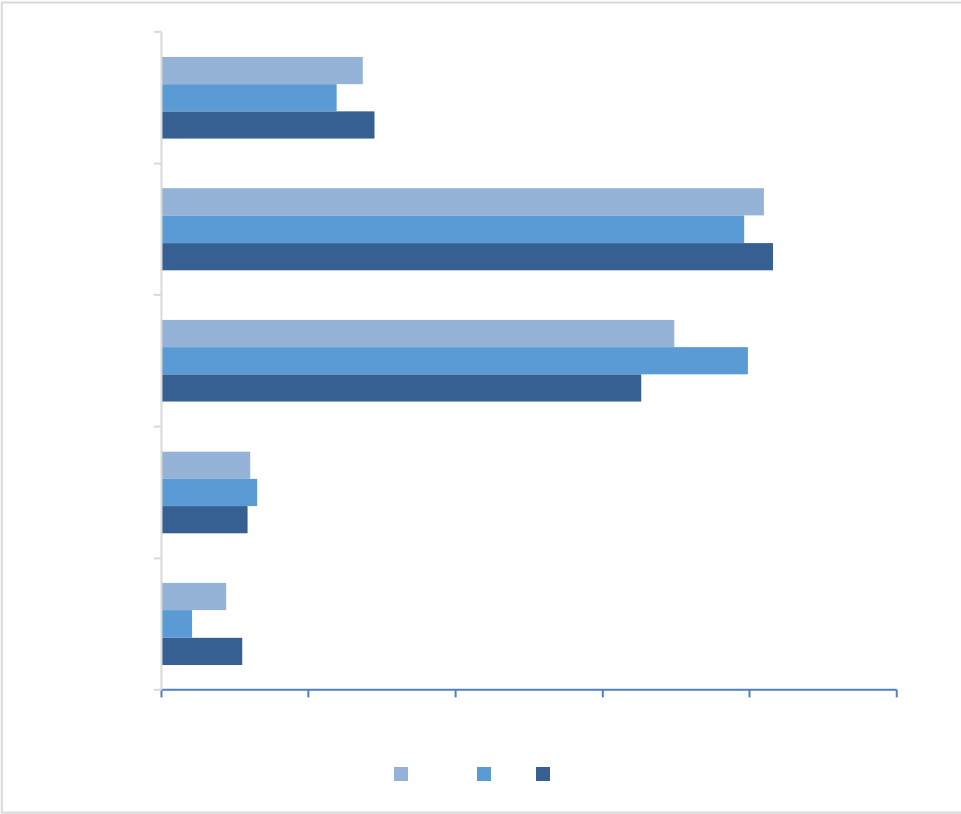
—

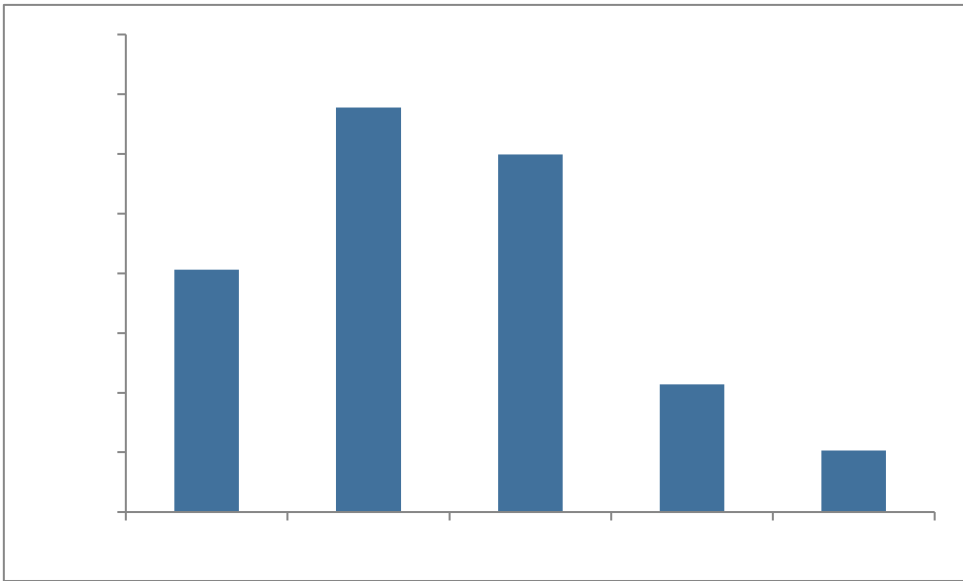


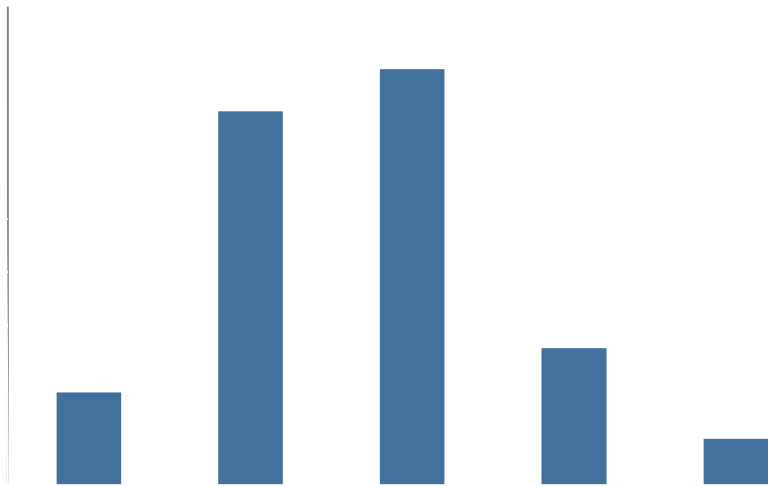












88.37% 2016

37.36%

9.36%

2016

97.51%

34.22%

47.32%

